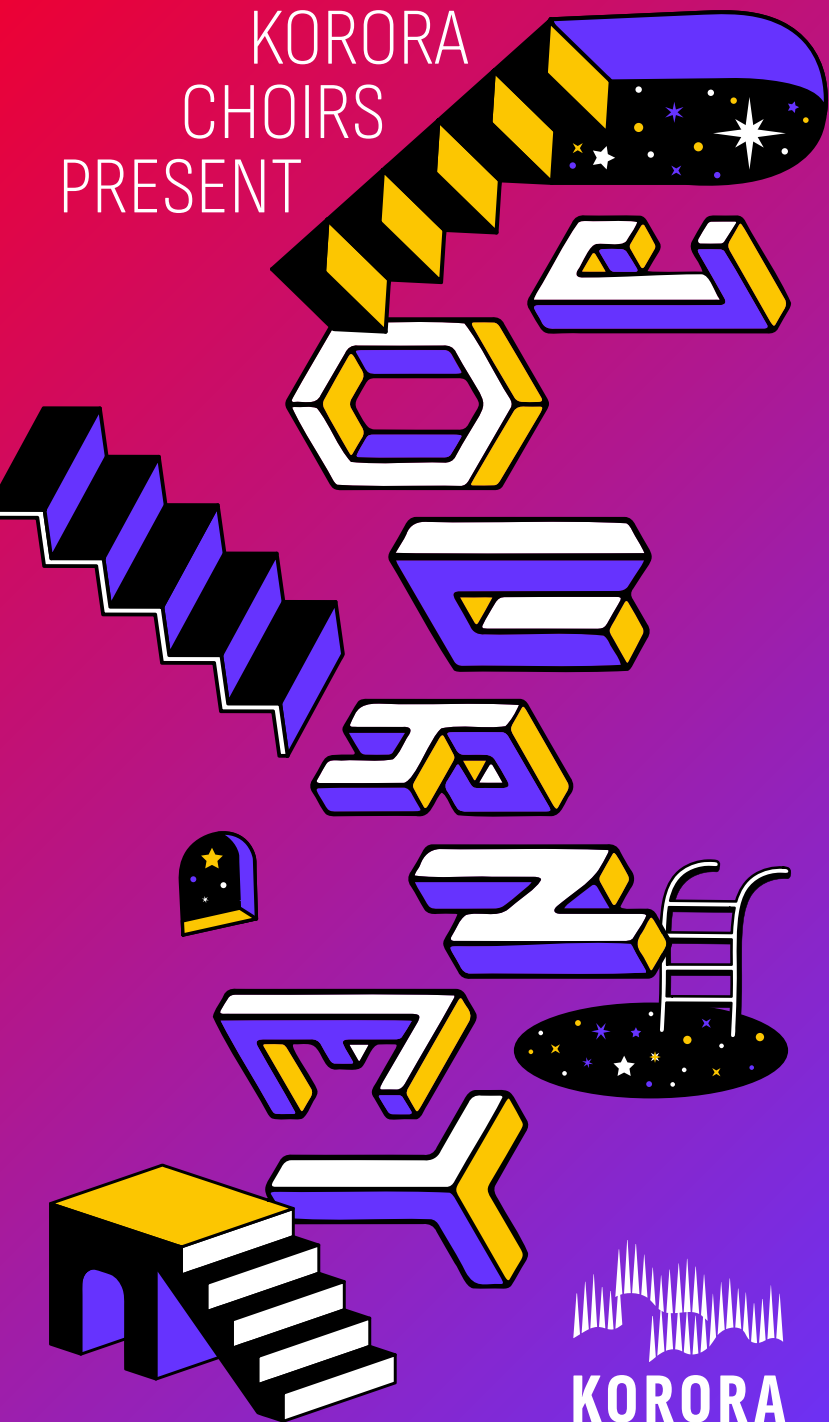


KORORA
CHOIRS
PRESENT




KORORA

Journey Schedule

3:00 PM

Òran • St. John's (Venue 1)

Braille Tones • Sacred Heart (Venue 2)

Kikimasu • Ansgar (Venue 3)

ChandraTala • The Rock (Venue 4)

3:30 PM

Vacilando • St. John's (Venue 1)

Tamariki • Sacred Heart (Venue 2)

Korora • The Rock (Venue 4)

4:00 PM

Vacilando & ChandraTala Upper Voices • St. John's (Venue 1)

Òran & Korora • Sacred Heart (Venue 2)

Kikimasu • Ansgar (Venue 3)

Shumayela • The Rock (Venue 4)

4:30 PM

Vacilando & Òran • St. John's (Venue 1)

Braille Tones & Korora • Sacred Heart (Venue 2)

5:00 PM

Shumayela • St. John's (Venue 1)

Kikimasu • Sacred Heart (Venue 2)

ChandraTala • Ansgar (Venue 3)

5:30 PM

Vacilando, ChandraTala, & Òran • St. John's (Venue 1)

Korora & Shumayela • Sacred Heart (Venue 2)

6:00 PM

Join us in the park next to Sacred Heart
for a group sing!

4

1. St. John's Evangelical Lutheran Church

2. Sacred Heart Church

3. Ansgar Danish Lutheran Church

4. St. Peter's/The Rock

110 Avenue

109A Avenue

109 Avenue

(Church Street)

3

108A Avenue

96 Street

2

Post-Concert Singalong in the Park

TAP ANY NUMBER TO FIND THE VENUE

108 Avenue

1

* join us in the park at 6 PM to sing with us!

[Plain Schedule & Map](#)

[Google Map of Venues](#)

Choir Biographies

[Korora \(ages 15-24\)](#)

[Tamariki \(ages 5-9\)](#)

[Kikimasu \(ages 9-12\)](#)

[Shumayela \(ages 12-16\)](#)

[Òran \(young adult mixed\)](#)

[Vacilando \(adult mixed\)](#)

[ChandraTala \(adult upper-voice\)](#)

[Braille Tones \(guest choir\)](#)

[Join Us!](#)



korora choirs

WINE RAFFIE

in partnership with
Vines Riverbend Wine Merchants

In partnership with Vines Riverbend Wine Merchants, we are delighted to present you with the chance to drink wine and feel noble about it! The more entries we have, the bigger the prizes get...

With your purchase, you will pay for a bottle of wine as well as your entry fee. Three lucky winners will split the bottles of wine purchased by all entrants, with proceeds to support our local arts organization during this challenging time.

1st Prize - a minimum of 25 bottles of wine (retail value \$500), up to 125 bottles of wine (retail value \$2500)

2nd Prize - a minimum of 15 bottles of wine (retail value \$300), up to 75 bottles of wine (retail value \$1500)

3rd Prize - a minimum of 10 bottles of wine (retail value \$200), up to 50 bottles of wine (retail value \$1000)

Please read raffle rules at the link for full details.

BUY TICKETS NOW

SPECIAL THANKS TO OUR SPONSORS



**Government
of Alberta ■**



Allstar Show Industries Inc.